



Precious Blood of Christ CATHOLIC PARISH

LOCAL HURRICANE EVACUATION ROUTES

UPDATED FOR 2025

EVACUATION ZONE A

Georgetown County:

Areas east of US Highway 17 from the Charleston County Line to the Horry County Line.

Horry County:

Areas east of U.S. Business 17 (S Kings Hwy) from Myrtle Beach State Park to the Georgetown County line, with coastal fluctuations in Surfside Beach and Garden City.

EVACUATION ZONE B

Georgetown County:

Areas east of Powell Road and US Highway 521 to Brick Chimney Road to North Fraser Street to Choppee Road to Plantersville Road and all low-lying areas along and east of the Waccamaw River, Great Pee Dee River, and Black River to US Highway 17.

Horry County:

Areas east of U.S. Business 17 from 16th Ave N to Vista Dr. in Surfside Beach. Areas between the Georgetown County line, TPC Blvd., Hwy 707 and Hwy 17.

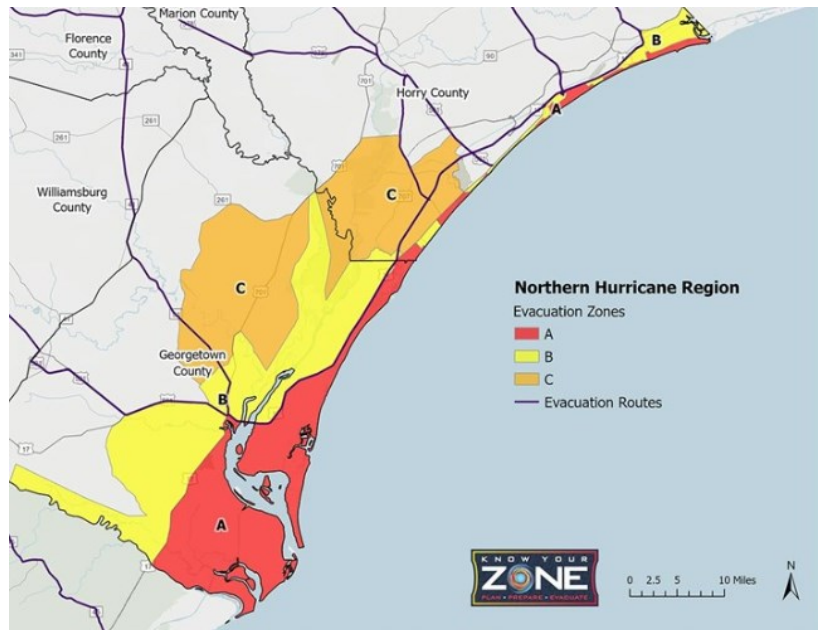
EVACUATION ZONE C

Georgetown County:

Areas north and east of Johnson Road to Dunbar Road to Rose Hill Road to Choppee Road to Carvers Bay Road to Pleasant Hill Drive to North Fraser Street to the Horry County Line and areas west of Plantersville Road to Choppee Road to Brick Chimney Road.

Horry County:

Areas between Hwy 701 and Hwy 544, with some fluctuations to Myrtle Beach International Airport and Waccamaw Blvd.



Take US 17 south through Georgetown, then take US 521 to SC 261 to US 378 to Columbia. Under certain conditions, an alternate route from Georgetown will be Black River Road to US 701 to SC 51 to SC 41 to US 378 at Kingsburg.

- + Know where you will go. Stay tuned to local tv or radio for emergency information. Charge mobile devices and bring extra batteries. Turn off electricity, gas and water at home. Make arrangements for pets which may not be allowed in shelters. Fuel up and service vehicles ahead of time.
- + Leave as soon as possible (daylight preferred). Roads and bridges frequently become crowded and traffic moves slowly. Give yourself plenty of time.
- + Secure your home and tell someone outside of your home area where you are going.
- + Bring pre-assembled emergency supplies. People mistakenly arrive at shelters or hotels empty handed. Having necessary items will make you more comfortable.
- + Practicing the route to your hotel or shelter before a storm will help you familiarize yourself with the route.



EMERGENCY ALERTS

HAVE MULTIPLE WAYS TO RECEIVE EMERGENCY ALERTS

Keeping Our Citizens Informed.

CodeRED

REGISTER FOR CODERED ALERTS!

Sign up for the CodeRED notification system to receive alerts and updates during emergency events.

All citizens and businesses are encouraged to register.

Everyone should have multiple ways to receive emergency alerts that can tell you what's happening and what you need to do. The following options are available to receive emergency alerts in Georgetown County:

- Wireless Emergency Alerts (WES) on your mobile devices
- NOAA Weather Radio
- Local broadcast TV and radio
- @GCMD and @SCCMD social media platforms

If you'd like additional public safety notifications, you can register for CodeRED alerts from the Georgetown County Emergency Management Division. You can select what types of alerts to receive and by what method, including text message, voice phone call, or email.

To register for CodeRED alerts for free, visit gtcounty.org/gcmd.

FOR LOCAL INFORMATION

FM Radio Stations:

WYAV 104.1 FM
WLFF 106.5 FM

ETV Radio Network:

WHMC 90.1 FM

NOAA Weather Radio:

162.400 Frequency

Television Stations:

Fox 43
WBTW
WMBF
WPDE

GET THE APP

Use the South Carolina Emergency Management Division's official app to prepare for emergencies.

Available to download from the Apple App Store or Google Play (iPhone and Android compatible).



- View Know Your Zone evacuation maps
- Customize and build a personal emergency plan
- Share your locations with emergency contacts
- Keep track of your disaster supplies kit
- Use the emergency alert whistle and strobe light
- Document storm damage



HURRICANE.SC

2025

Hurricane SHELTER Information

Dept. of Transportation Information:

1-855-467-2368 (toll free)

Evacuation and Shelter Information:

1-866-246-0133 (toll free)

IMPORTANT NUMBERS

Emergency Number

—911—

Emergency Management:

Georgetown County (843) 545-3273

Horry County (843) 915-5150

Georgetown County Sheriff: (843) 546-5102

State Highway Patrol: (843) 546-7300

Area Hospitals: Georgetown (843) 527-7000

Waccamaw (843) 652-1000

Grand Strand (843) 692-1000

Conway (843) 347-7111

Red Cross: (843) 546-5422

Midway Fire Pawleys Island: (843) 545-3620

Santee Cooper/Non-Emergency: (843) 347-3399

Emergency (888) 769-7688

**Public Information Phone System (866) 246-0133
(only activated as needed)**

Georgetown County Storm Info (843) 545-3900

Hurricane Season Preparedness Digital Toolkit | Ready.gov

The Hurricane Seasonal Preparedness Digital Toolkit has safety and preparedness...prepare for and survive during a hurricane....Disabilities Social Media Toolkit Hurricane Season Preparedness Digital Toolkit...Emergency Management Information Hurricane Season Preparedness Digital ...
www.ready.gov/hurricane-toolkit



Stay Informed

- ✓ Pay attention to emergency information and alerts.
- ✓ If you live in a mandatory evacuation zone and local officials tell you to evacuate, do so immediately.